

PINOUT

DESCRIPTION:

Pinout for Pro Co ConcertMaster 85-pin Cable/Panel-mount male multipin connectors (TLDC85LM01, TLDC85PM02) Rear pinout view shown.

NOTE: This is also the front view for female connectors.

ABBREVIATIONS:

- S = Shield
- + = Hot (+)
- = Cold (-)

STANDARD PREP LENGTHS:

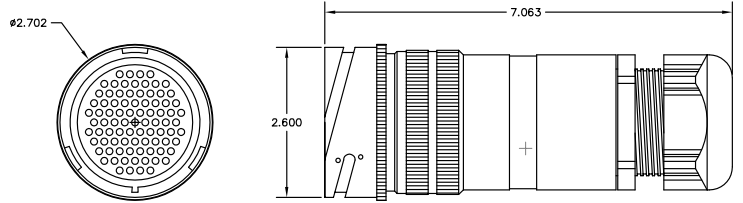
| Channel # | Length |
|-----------|--------|
| 1 - 8 | 2-5/8" |
| 9 - 16 | 1-7/8" |
| 17 - 24 | 3" |
| 25 - 32 | 1-1/2" |

85-PIN TOURLINE MULTIPIN CONNECTOR PART NUMBERS:

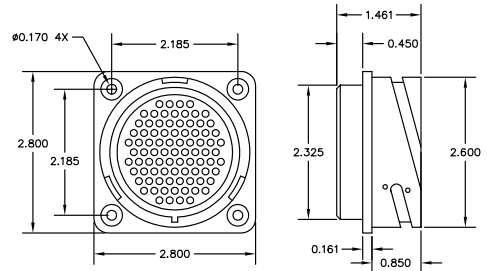
| PART NUMBER | DESCRIPTION |
|-------------|---|
| TLDC85LF06 | Female, Cable mount, w/Locking ring, Dust cap |
| TLDC85PF26 | Female, Panel mount, w/Locking ring, Dust cap |
| TLDC85LM01 | Male, Cable mount, Dust cap |
| TLDC85PM02 | Male, Panel mount, Dust cap |

All Tourline multipin connectors are delivered pre-populated with solder-type contacts.
Replacement contacts and tools are available from Pro Co.
Please contact 800-253-7360 for assistance.

| CHANNEL PINOUT | | | | CHANNEL PINOUT | | | | CHANNEL PINOUT | | | |
|----------------|---|---|---|----------------|----|----|----|----------------|----|----|----|
| CH | + | - | S | CH | + | - | S | CH | + | - | S |
| 1 | A | B | C | 10 | k | m | n | 19 | AT | AU | AV |
| 2 | E | F | H | 11 | p | q | r | 20 | AW | AX | AY |
| 3 | J | K | L | 12 | t | u | v | 21 | AZ | BA | BB |
| 4 | N | P | R | 13 | w | x | y | 22 | BC | BD | BE |
| 5 | S | T | U | 14 | z | AA | AB | 23 | BJ | BK | BL |
| 6 | X | Y | Z | 15 | AC | AD | AE | 24 | BM | BN | BP |
| 7 | a | b | c | 16 | AF | AH | AJ | 25 | BS | BT | BU |
| 8 | d | f | g | 17 | AK | AL | AM | 26 | BV | BR | BF |
| 9 | h | i | j | 18 | AP | AR | AS | 27 | BH | AN | s |
| | | | | | | | | 28 | W | M | D |

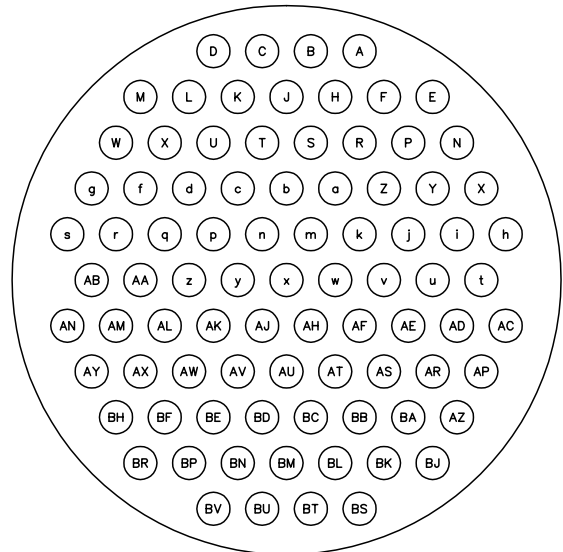


TL-85-LM01: 85 PIN MALE CABLE MOUNT CONNECTOR



TL-85-PM02: 85 PIN MALE PANEL MOUNT CONNECTOR

REAR VIEW



TL-85-PM02: 85 PIN MALE CONNECTOR