

## PINOUT

### DESCRIPTION:

Pinout for Pro Co ConcertMaster 85-pin Cable/Panel-mount female multipin connectors (TLDC85LF06, TLDC85PF26) Rear pinout view shown.

NOTE: This is also the front view for male connectors.

### ABBREVIATIONS:

- S = Shield
- + = Hot (+)
- = Cold (-)

### STANDARD PREP LENGTHS:

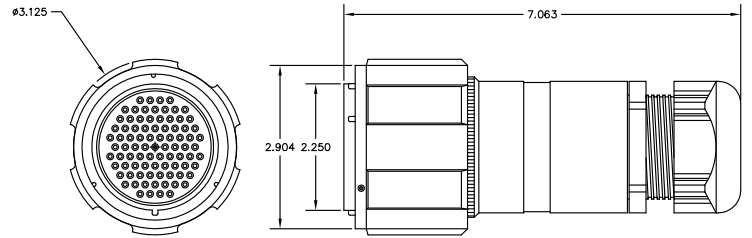
Channel #	Length
1 - 8	2-5/8"
9 - 16	1-7/8"
17 - 24	3"
25 - 32	1-1/2"

## 85-PIN TOURLINE MULTIPIN CONNECTOR PART NUMBERS:

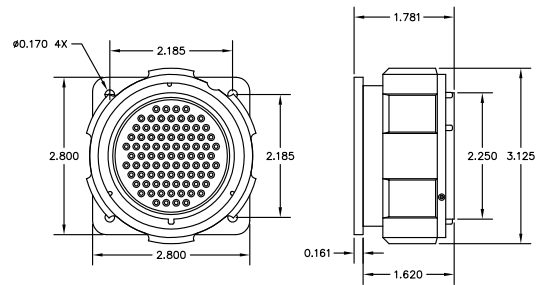
PART NUMBER	DESCRIPTION
TLDC85LF06	Female, Cable mount, w/Locking ring, Dust cap
TLDC85PF26	Female, Panel mount, w/Locking ring, Dust cap
TLDC85LM01	Male, Cable mount, Dust cap
TLDC85PM02	Male, Panel mount, Dust cap

All Tourline multipin connectors are delivered pre-populated with solder-type contacts. Replacement contacts and tools are available from Pro Co. Please contact 800-253-7360 for assistance.

CHANNEL PINOUT				CHANNEL PINOUT				CHANNEL PINOUT			
CH	+	-	S	CH	+	-	S	CH	+	-	S
1	A	B	C	10	k	m	n	19	AT	AU	AV
2	E	F	H	11	p	q	r	20	AW	AX	AY
3	J	K	L	12	t	u	v	21	AZ	BA	BB
4	N	P	R	13	w	x	y	22	BC	BD	BE
5	S	T	U	14	z	AA	AB	23	BJ	BK	BL
6	X	Y	Z	15	AC	AD	AE	24	BM	BN	BP
7	a	b	c	16	AF	AH	AJ	25	BS	BT	BU
8	d	f	g	17	AK	AL	AM	26	BV	BR	BF
9	h	i	j	18	AP	AR	AS	27	BH	AN	s
								28	W	M	D

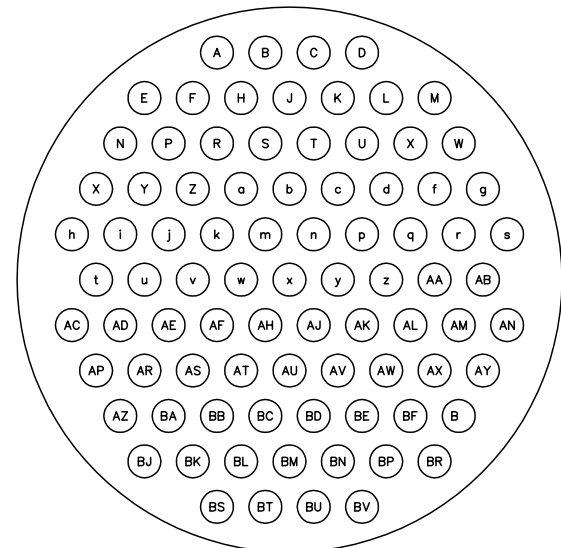


TL-85-LF06: 85 PIN FEMALE CABLE MOUNT CONNECTOR



TL-85-PF26: 85 PIN FEMALE PANEL MOUNT CONNECTOR

### REAR VIEW



TL-85-PF26: 85 PIN FEMALE CONNECTOR