

# PINOUT

## DESCRIPTION:

Pinout for Pro Co ConcertMaster 54-pin Cable/Panel-mount male multipin connectors (TLDC54LM01, TLDC54PM02) Rear pinout view shown.

NOTE: This is also the front view for female connectors.

## ABBREVIATIONS:

- S = Shield
- + = Hot (+)
- = Cold (-)

## STANDARD PREP LENGTHS:

Channel #	Length
1 - 8	2-5/8"
9 - 16	1-7/8"
17 - 24	3"
25 - 32	1-1/2"

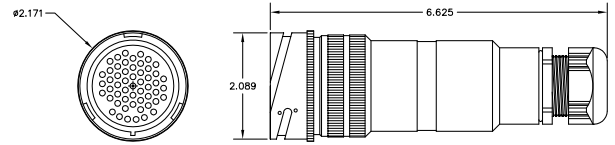
## 54-PIN TOURLINE MULTIPIN CONNECTOR PART NUMBERS:

PART NUMBER	DESCRIPTION
TLDC54LF06	Female, Cable mount, w/Locking ring, Dust cap
TLDC54PF26	Female, Panel mount, w/Locking ring, Dust cap
TLDC54LM01	Male, Cable mount, Dust cap
TLDC54PM02	Male, Panel mount, Dust cap

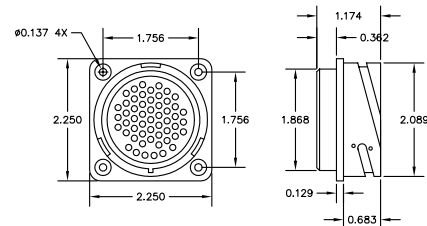
All Tourline multipin connectors are delivered pre-populated with solder-type contacts.

Replacement contacts and tools are available from Pro Co.

Please contact 800-253-7360 for assistance.

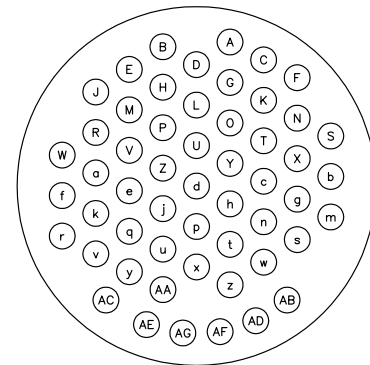


TL-54-LM01: 54 PIN MALE CABLE MOUNT CONNECTOR



TL-54-PM02: 54 PIN MALE PANEL MOUNT CONNECTOR

### REAR VIEW



TL-54-PM02: 54 PIN MALE CONNECTOR

CHANNEL PINOUT			
CHANNEL	+	-	S
1	W	f	r
2	J	R	a
3	k	v	AC
4	E	M	V
5	e	q	y
6	B	H	P
7	Z	j	u
8	D	L	U
9	d	p	x

CHANNEL PINOUT			
CHANNEL	+	-	S
10	A	G	O
11	Y	h	t
12	C	K	T
13	c	n	w
14	F	N	X
15	g	s	AB
16	S	b	m
17	AA	AG	AE
18	Z	AD	AF