

# PINOUT

## DESCRIPTION:

Pinout for Pro Co ConcertMaster 25-pin Cable/Panel-mount male multipin connectors (TLDC25LM01, TLDC25PM02) Rear pinout view shown.  
NOTE: This is also the front view for female connectors.

## ABBREVIATIONS:

- S = Shield
- + = Hot (+)
- = Cold (-)

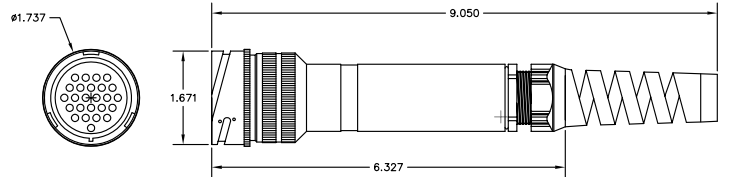
## STANDARD PREP LENGTHS:

Channel #	Length
1 - 8	2-5/8"
9 - 16	1-7/8"
17 - 24	3"
25 - 32	1-1/2"

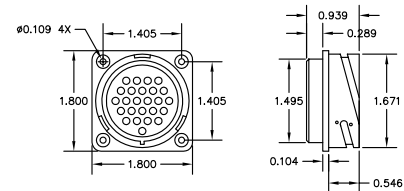
## 25-PIN TOURLINE MULTIPIN CONNECTOR PART NUMBERS:

PART NUMBER	DESCRIPTION
TLDC25LF06	Female, Cable mount, w/Locking ring, Dust cap
TLDC25PF26	Female, Panel mount, w/Locking ring, Dust cap
TLDC25LM01	Male, Cable mount, Dust cap
TLDC25PM02	Male, Panel mount, Dust cap

All Tourline multipin connectors are delivered pre-populated with solder-type contacts. Replacement contacts and tools are available from Pro Co. Please contact 800-253-7360 for assistance.

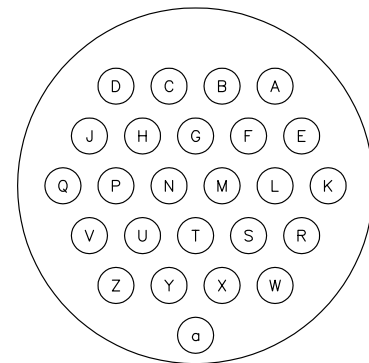


TL-25-LM01: 25 PIN MALE CABLE MOUNT CONNECTOR



TL-25-PM02: 25 PIN MALE PANEL MOUNT CONNECTOR

### REAR VIEW



TL-25-PM02: 25 PIN MALE CONNECTOR

CHANNEL PINOUT			
CHANNEL	+	-	S
1	A	E	F
2	G	C	B
3	D	H	J
4	M	L	K
5	Q	P	N
6	W	S	R
7	T	X	Y
8	Z	V	U