



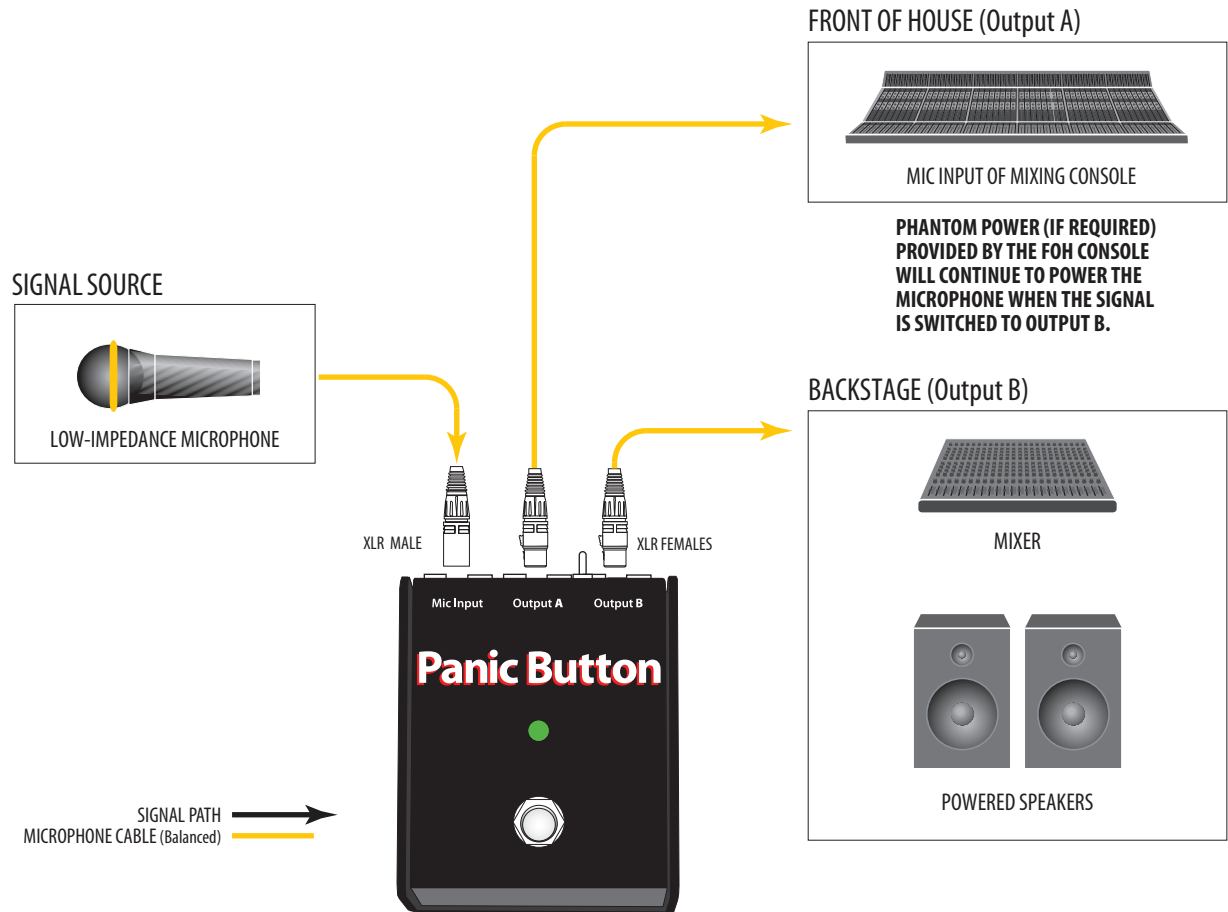
On Stage
with
the Best

TradeTools™

Panic Button

MICROPHONE A-B & MUTING SWITCH

APPLICATION INFORMATION



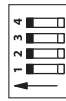
CONTROLS:

- | | |
|---|---|
| <p>MIC INPUT: Female 3-pin XLR-type connector accepts input from any balanced or floating low impedance (150 ohm nominal) microphone or similar signal source.</p> <p>OUTPUT A/B: Male 3-pin XLR-type connector provides output to sound system inputs.</p> <p>ON/OFF: Mini toggle switch turns power to unit on and off.</p> <p>+9V: Receptacle for 3.5mm plug of AC power supply.</p> <p>ACTIVATION SWITCH: Switch selects the route or condition of the microphone signal. In A/B mode it selects between Outputs A and B, and in Mute mode it will either mute the signal or allow it to pass to the output.</p> | <p>STATUS LIGHT: Color of light indicates path of microphone signal. Green light indicates microphone is routed to Output A. Red light indicates microphone is routed to Output B (in A/B mode) or that the signal is muted (in Mute mode).</p> <p>DIP SWITCHES: A set of four dip switches allow selection between latching/momentary latch action, push-to-talk/push-to-mute push button action, mute/A-B mode, and ground/lift</p> <p>GAIN CONTROL: A mini gain pot is located in the battery compartment. This control affects the gain of Output B. Clockwise rotation of the control increases gain. Counter-clockwise rotation of the control decreases gain.</p> |
|---|---|

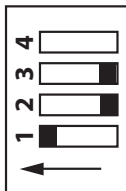
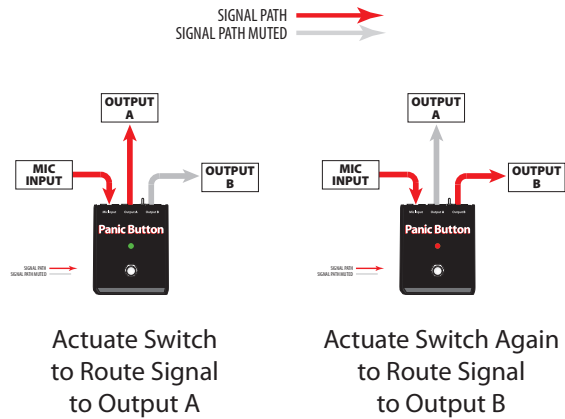
APPLICATION INFORMATION

Panic Button: A-B MODE

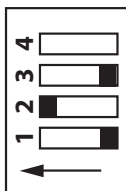
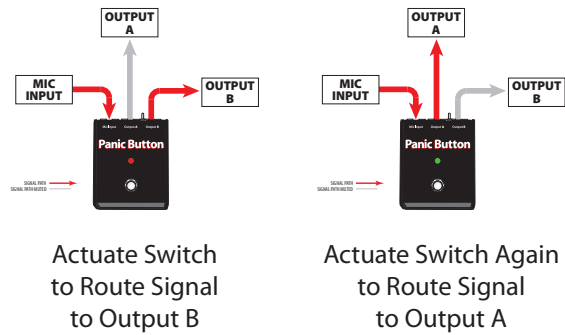
- 1. Latch Action (LCH)
 - Latching
 - Momentary
- 2. Push Action (PUSH)
 - Push To Talk (A)
 - Push To Mute (B)
- 3. Mode (MODE)
 - A-B
 - Mute
- 4. Ground Lift
 - Ground
 - LIR



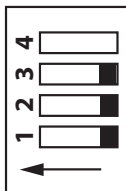
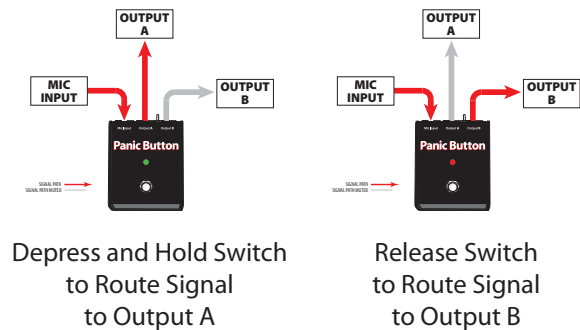
MODE CONDITION SWITCH A-B
PUSH TO TALK
LATCHING



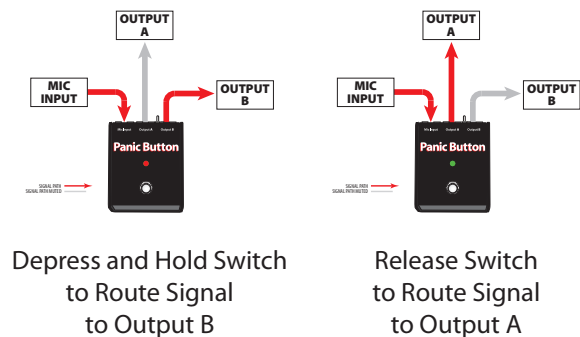
MODE CONDITION SWITCH A-B
PUSH TO MUTE
LATCHING



MODE CONDITION SWITCH A-B
PUSH TO TALK
MOMENTARY



MODE CONDITION SWITCH A-B
PUSH TO MUTE
MOMENTARY



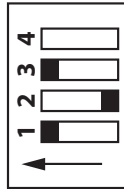
APPLICATION INFORMATION

Panic Button: MUTE MODE

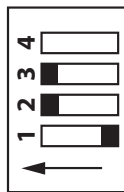
- 1. Latch Action (LCH)
 - Latching
 - Momentary
- 2. Push Action (PUSH)
 - Push To Talk (A)
 - Push To Mute (B)
- 3. Mode (MODE)
 - Mute
 - A-B
- 4. Ground Lift
 - Ground
 - Lift



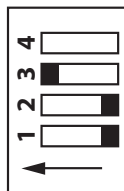
MODE CONDITION SWITCH MUTE
PUSH TO TALK LATCHING



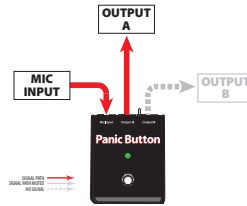
MODE CONDITION SWITCH MUTE
PUSH TO MUTE LATCHING



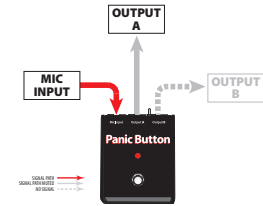
MODE CONDITION SWITCH MUTE
PUSH TO TALK MOMENTARY



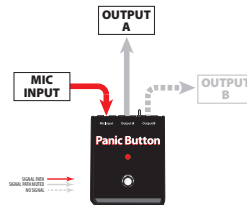
MODE CONDITION SWITCH MUTE
PUSH TO MUTE MOMENTARY



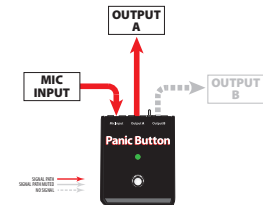
Actuate Switch to Route Signal thru Output A



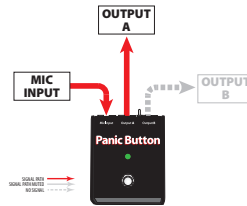
Actuate Switch Again to Mute Signal thru Output B



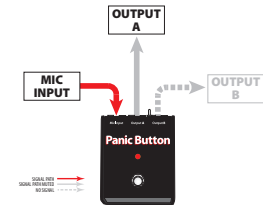
Actuate Switch to Mute Signal thru Output A



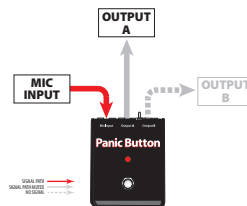
Actuate Switch Again to Route Signal thru Output A



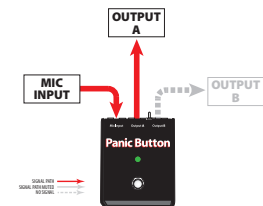
Depress and Hold Switch to Route Signal thru Output A



Release Switch to Mute Signal thru Output A



Depress and Hold Switch to Mute Signal to Output A



Release Switch to Route Signal thru Output A

NOTES:

- For safety reasons, all equipment with 3-wire AC line cords should be connected to properly grounded receptacles.**
- Microphones require a ground connection somewhere in the signal path. For this reason it is suggested that a properly grounded mixer always be connected to the DIRECT OUTPUT.
- Panic Button Units receiving inputs from AC-line-powered sources such as keyboards or stage amplification should have their GND/LIFT switches set to LIFT and the source equipment line cords properly connected to grounded 3-wire receptacles whenever possible. (See note 1).

SETTINGS:

1. Latch Action (LCH)

- Latching
- Momentary

2. Push Action (PUSH)

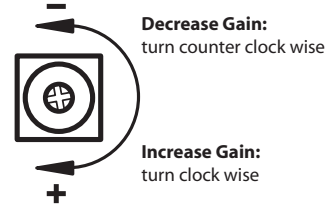
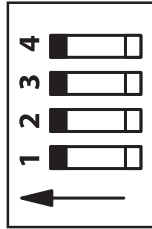
- Push To Talk (A)
- Push To Mute (B)

3. Mode (MODE)

- Mute
- A-B

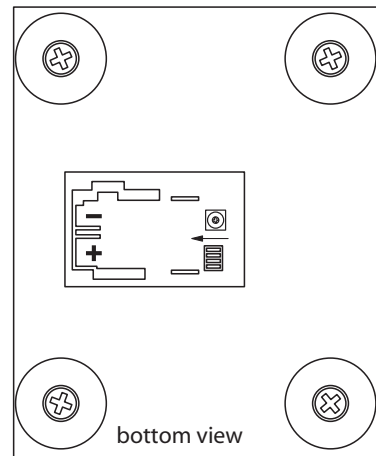
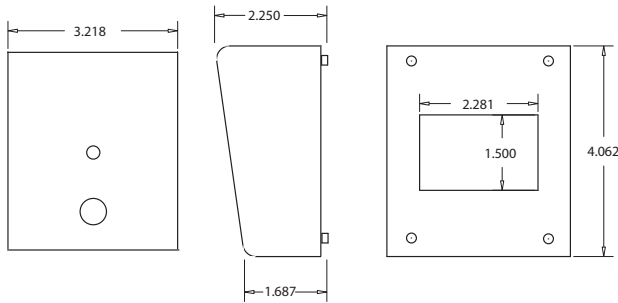
4. Ground Lift

- Ground
- Lift



PRO CO MODEL: CDPB Panic Button

DIMENSIONS: 4.062" D x 3.218" W x 2.250" H
 103.2mm D x 81.7mm W x 57.2mm H
WEIGHT: 1.00 lb / .45 kg
SHIPPING WEIGHT: 2.00 lb / .91 kg



Other TradeTools™ Products from Pro Co

- | | |
|--|---|
| AV1B Audio/Video Interface Unit | MC2 Microphone Combiner |
| AVP1 Wallplate Format Audio/Video Interface Unit | MS2 1:2 Microphone Splitter |
| AVP1V Wallplate Format Audio/Video Interface Unit with Input Level Control | MS3 1:3 Microphone Splitter |
| CB1 Direct Box | MS42A Rackmount Quad 1:2 Microphone Splitter |
| DB1 Professional Direct Box | MS43A Rackmount Quad 1:3 Microphone Splitter |
| DB2 Professional Stereo Direct Box | MS82 Rackmount 8-ch. 1:2 Microphone Splitter |
| DB4A Rackmount Quad Direct Box | MS82P Rackmount 8-ch. 1:2 Phantom Power Microphone Splitter |
| DBA1 Professional Active Direct Box | MS83 Rackmount 8-ch. 1:3 Microphone Splitter |
| HJ4P Professional Stereo headphone Junction Box | MS83P Rackmount 8-ch. 1:3 Phantom Power Microphone Splitter |
| HJ6 Headphone Junction Box | Panic Button Multi-mode Mic A/B & Muting Unit |
| iFace Portable Audio Player Interface | Power Mute Multi-Mode Mic Muting Switch |
| iGate Universal Audio Gateway | Short Stop Momentary Press-to-Mute Mic Switch |
| iPlate Wallplate Format Portable Audio Player Interface | Sign Off Latching Mic Muting Switch |
| iRack Rackmount Portable Audio Player Interface | SAS1 Sports Announcer's Switch (Press-to-Talk) |
| IT1 Isolation Transformer Unit | SAS2 Sports Announcer's Switch (Press-to-Talk) with Gooseneck |
| IT4A Rackmount Quad Isolation Transformer Unit | SAS3 Sports Announcer's Switch (Press-to-Talk) with wired Gooseneck |
| IT8A Rackmount 8-ch. Isolation Transformer Unit | Switch Witch Rackmount 4-ch. Powered Monitor Selector |
| LS82 Rackmount 8-ch. 1:2 Line Level Splitter | ... plus our full line of audio cabling, snakes! |



Pro Co Sound
 225 Parsons Street | Kalamazoo, MI 49007
 800-253-7360

» www.procosound.com